

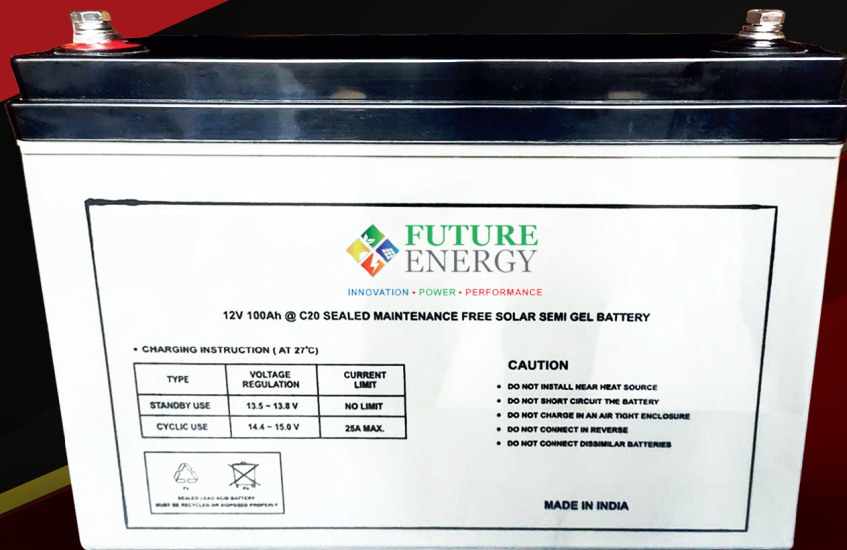


FUTURE ENERGY

INNOVATION • POWER • PERFORMANCE

VRLA AGM

SEALED MAINTENANCE FREE
VRLA AGM BATTERY



KEY FEATURES

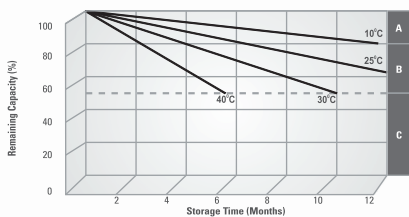
- AGM VRLA Technology • Ultra Low Self - Discharging • Wide Operating Temperature Range
- Superior AGM Separator • Extended life Cycles • Prevent Micro Short Circuit
- High Grade Lead Calcium Alloy Grid For Extended Life
- Quick Deep - Discharge Recovery • Operate & Recharge in any position • Robust ABS casing

TECHNICAL SPECIFICATIONS

Model	Capacity (AH) at 27°C					HRD 0.5 hr Amperes 9.6V	Dimensions (mm) ± 3mm				Normal Charging Current (A)	Short Circuit Current (A)	Internal Resistance (mΩ)	Battery Weight (Kg) ± 3%	Terminal Type
	20 hr 10.5V	10 hr 10.5V	5 hr 10.5V	3 hr 10.5V	1 hr 10.2V		Length	Width	Height	Total Height					
SSP12-6.5	6.50	6.05	5.53	4.88	3.90	6.50	151.50	65.00	94.00	100.00	0.65	97.50	30.00	2.00	F2
SSP12-7	7.00	6.51	5.95	5.25	4.20	7.00	151.50	65.00	94.00	100.00	0.70	105.00	30.00	2.15	F2
SSP12-7.5	7.50	6.98	6.38	5.63	4.50	7.50	151.50	65.00	94.00	100.00	0.75	112.00	30.00	2.35	F2
SSP12-9	9.00	8.37	7.65	6.75	5.40	9.00	151.50	65.00	94.00	100.00	0.90	135.00	19.00	2.55	F2
SSP12-10	10.00	9.30	8.50	7.50	6.00	10.00	151.00	98.00	94.50	100.00	1.00	150.00	15.00	3.35	F2
SSP12-12	12.00	11.16	10.20	9.00	7.20	12.00	151.00	98.00	94.50	100.00	1.20	180.00	15.00	3.55	F2
SSP12-18	18.00	16.74	15.30	13.50	10.80	18.00	180.00	77.00	172.00	172.00	1.80	270.00	14.00	6.00	T4
SP12-26	26.00	24.18	22.10	19.50	15.60	26.00	166.00	176.00	125.00	125.00	2.60	390.00	14.00	8.45	T5
SP12-42	42.00	39.06	35.70	31.50	25.20	42.00	197.00	165.00	179.00	179.00	4.20	630.00	13.00	13.40	T6
SP12-45	45.00	41.85	38.25	33.75	27.00	45.00	197.00	165.00	179.00	179.00	4.50	675.00	13.00	14.50	T6
SP12-55	55.00	51.15	46.75	41.25	33.00	55.00	349.00	167.00	190.00	192.00	5.50	825.00	11.00	19.50	T6
SP12-65	65.00	60.45	55.25	48.75	39.00	65.00	349.00	167.00	190.00	192.00	6.50	975.00	11.00	21.90	T6
SP12-75	75.00	69.75	63.75	56.25	45.00	75.00	349.00	167.00	190.00	192.00	7.50	1125.00	11.00	23.50	T6
SP12-90	90.00	83.70	76.50	67.50	54.00	90.00	331.00	173.00	223.00	225.00	9.00	1350.00	9.00	28.90	T6
SP12-100	100.00	93.00	85.00	75.00	60.00	100.00	331.00	173.00	223.00	225.00	10.00	1500.00	5.30	30.00	T6
SP12-120	120.00	111.60	102.00	90.00	72.00	120.00	405.00	172.00	226.00	226.00	12.00	1800.00	4.00	37.20	T8
SP12-130	130.00	120.90	110.50	97.50	78.00	130.00	485.00	170.00	242.00	242.00	13.00	1950.00	4.00	40.40	T8
SP12-150	150.00	139.50	127.50	112.50	90.00	150.00	485.00	170.00	242.00	242.00	15.00	2250.00	3.60	43.70	T8
SP12-165	165.00	153.45	140.25	123.75	99.00	165.00	485.00	170.00	242.00	242.00	16.50	2475.00	3.60	48.50	T8
SP12-200	200.00	186.00	170.00	150.00	120.00	200.00	522.00	238.00	219.00	225.00	20.00	3000.00	3.60	60.00	T8
SP12-220	220.00	204.60	187.00	165.00	132.00	220.00	522.00	238.00	219.00	225.00	22.00	3300.00	3.00	63.00	T8
SP12-240	240.00	223.20	204.00	180.00	144.00	240.00	522.00	238.00	219.00	225.00	24.00	3600.00	3.00	66.00	T8

*Specifications are under continuous improvement. Subject to change without notice.

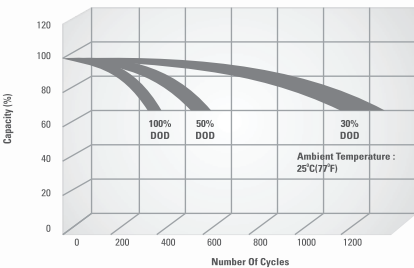
Self Discharge Characteristics



- A** No Supplementary Charge required
(Carry out supplementary charge before use if 100% capacity is required)
- B** Supplementary Charge required before use. Optional charging way as below :
1. Charge for 16-20 hours at 0.065C₂₀ at constant voltage 2.3 V/Cell
2. Charge for 30-36 hours at 0.05C₂₀ at constant voltage 2.35 V/Cell
- C** Supplementary Charge may often fail to recover the capacity
The battery should never be left standing till this is reached

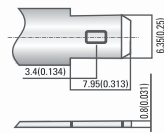
Cycle Life in Relation to Depth of Discharge

Testing Condition
Temperature : 25°C.
Discharging : 3.4 x I₂₀ for 3 hours.
Charging : 6 x I₂₀ for 16 hours at 14.1V.



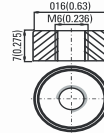
Battery Terminal Options

Terminal Type : F2



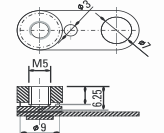
Faston Type (Brass) Quick Disconnect Tabs; Silver Coating For Better Conductivity.

Terminal Type : T6



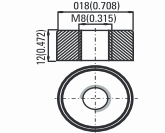
Brass Coated With Tin. Threaded Insert 6mm Stud. Torque : 5.2 N*m

Terminal Type : T4



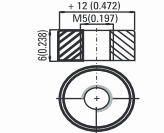
Brass Coated With Tin. Threaded Insert Torque : 3.0 N*m

Terminal Type : T8



Brass Coated With Tin. Threaded Insert 8mm Stud. Torque : 12.5 N*m

Terminal Type : T5



Brass Coated With Tin. Threaded Insert 5mm Stud. Torque : 3.0 N*m